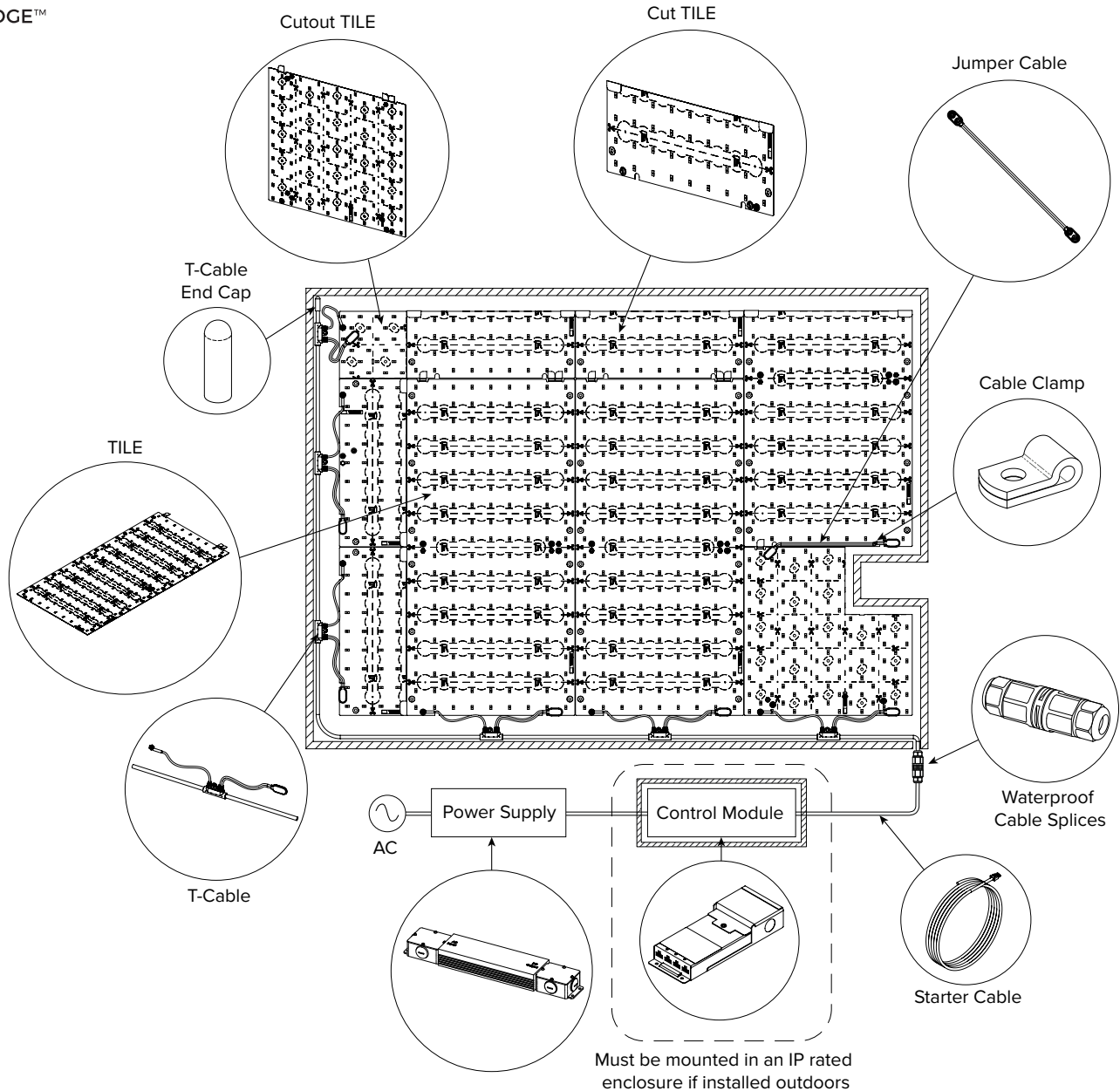


# COOLEDGE TILE TNW EXTERIOR R3 - QUICKSTART GUIDE



For detailed instructions, please refer to:  
- EXT-0102-R00 TILE TNW Exterior R3 Installation Guide



Caution: Observe precautions for handling electrostatically sensitive devices.



**RoHS**



**5 Year Limited Warranty:**  
Parts and workmanship

Cooledge Lighting Inc.  
110-13551 Commerce Parkway  
Richmond, BC V6V 2L1 Canada

O +1604 273 2665  
F +1604 273 2660  
T +1844 455 4448  
W [cooledgelighting.com](http://cooledgelighting.com)

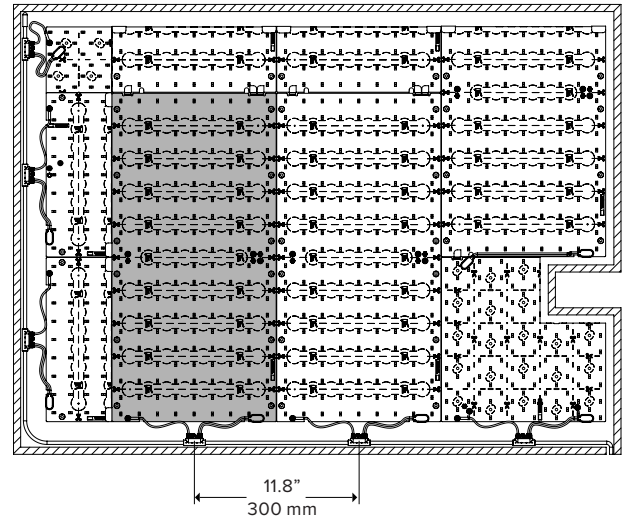
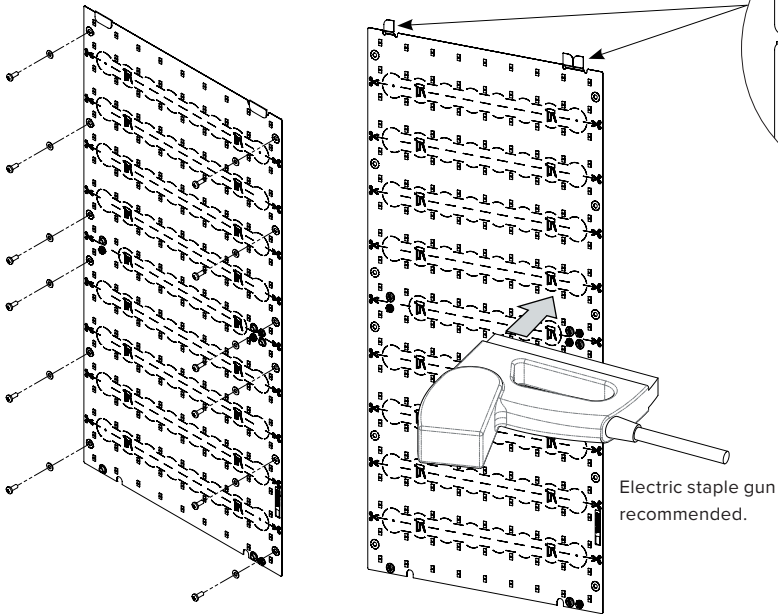
Cooledge Lighting reserves the right to change materials or modify the design of its product without notification as part of the company's continuing product improvement program.

EXT-0080-R01-04052022 (LTR) 1/5

## 1 INSTALL EXTERIOR TILE

NOTE: Mounting surface must be non-conductive (eg. drywall, plywood, etc)

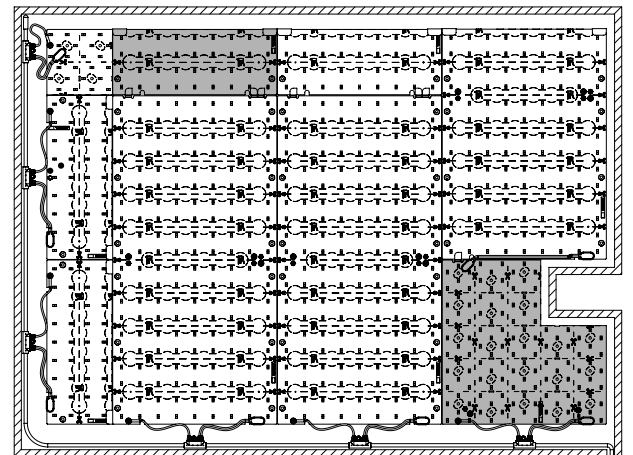
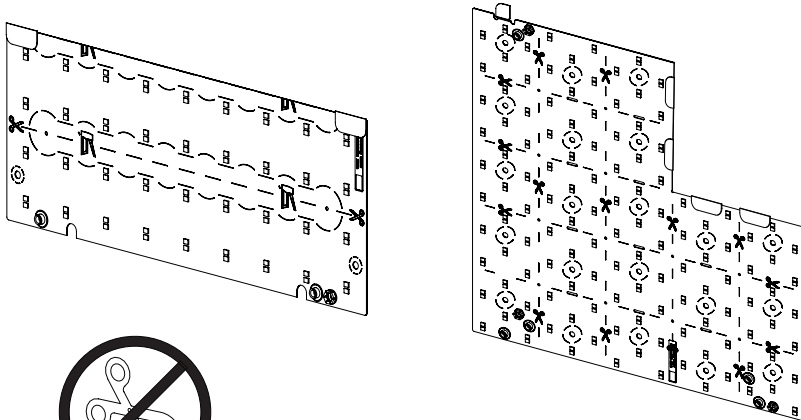
Snap together to connect light sheets



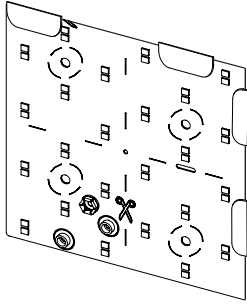
## 2 PRE-CUT EXTERIOR TILES AND CUTOUTS TILES

EXTERIOR TILES CANNOT BE CUT.  
Cutting of the TILES will compromise the protective coating.

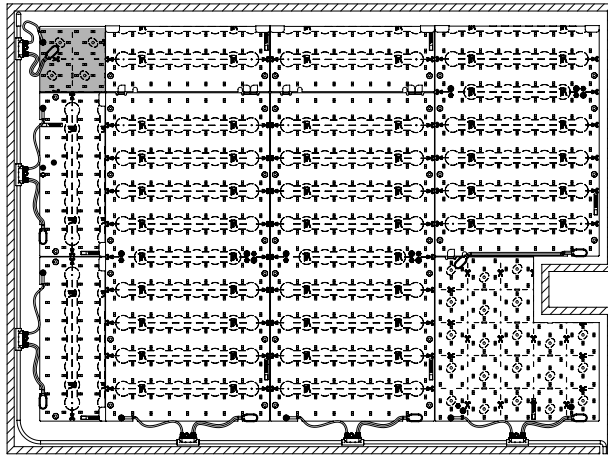
Each TILE is cut according to the submittal drawing in the factory. Refer to the identification label on the back of each TILE and job submittal for the installation location.



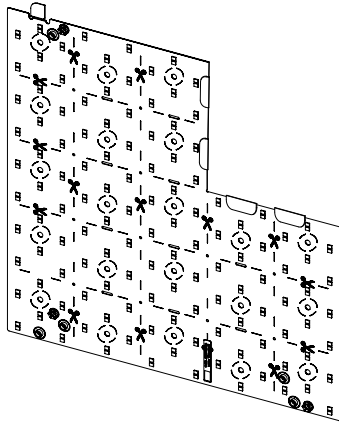
### 3 INSTALL CUT-OUT TILE IN CORNER



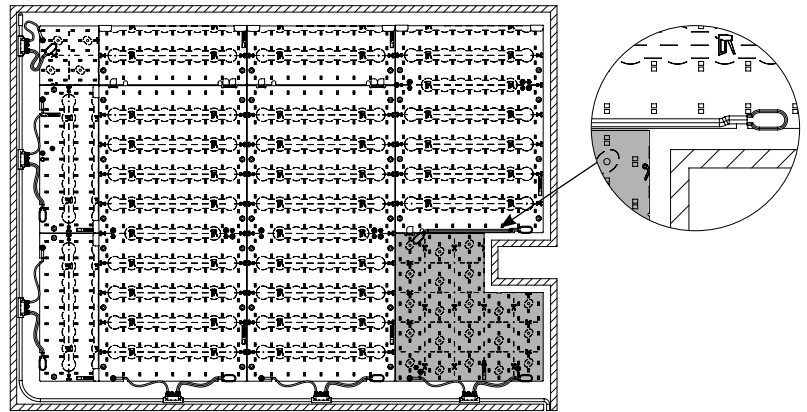
Install with screws and plastic washers.  
Do not use staples on the Cut-out TILE.



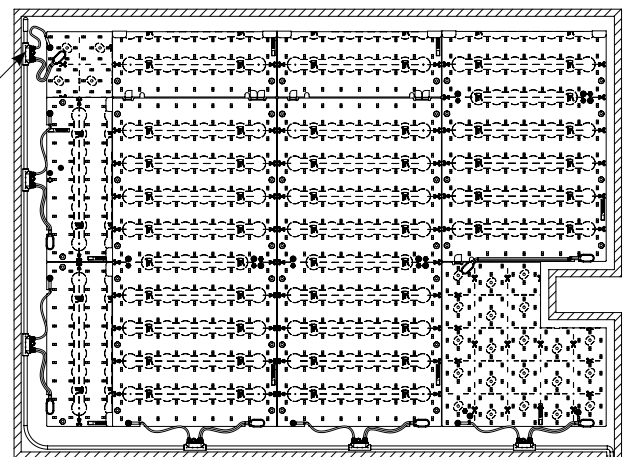
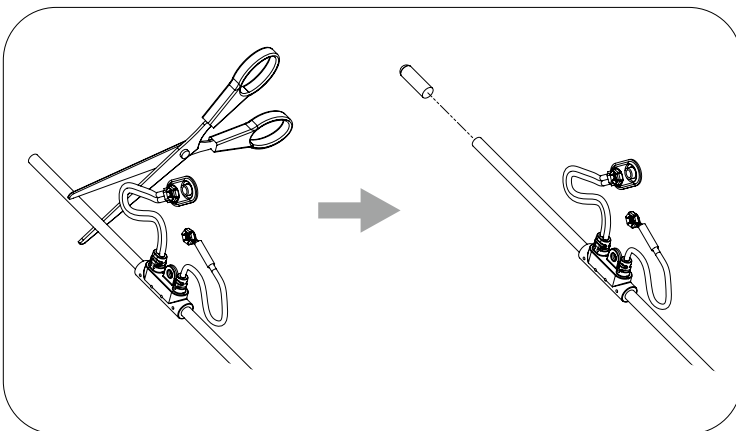
### 4 INSTALL CUT-OUT TILE(S)



Install with screws and plastic washers.  
Do not use staples on the Cut-out TILE.



### 5 INSTALL T-CABLE AND CUT TO SIZE



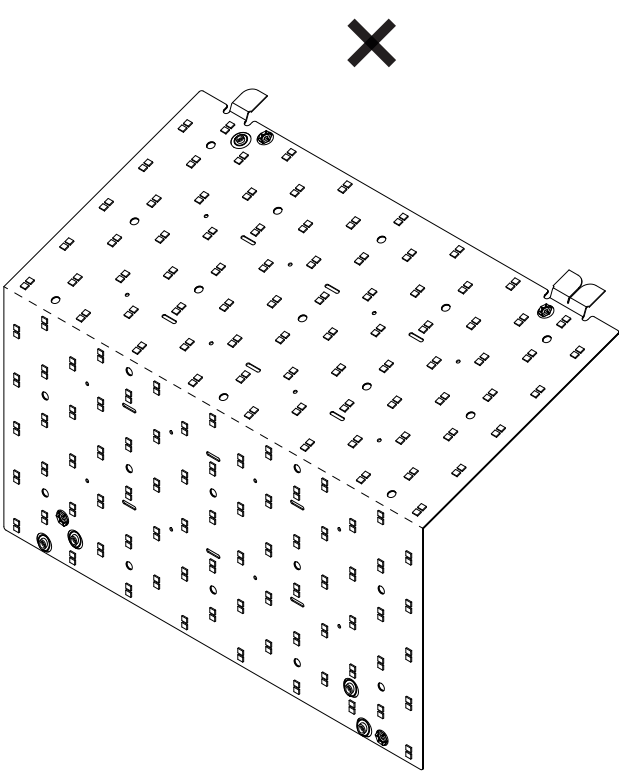
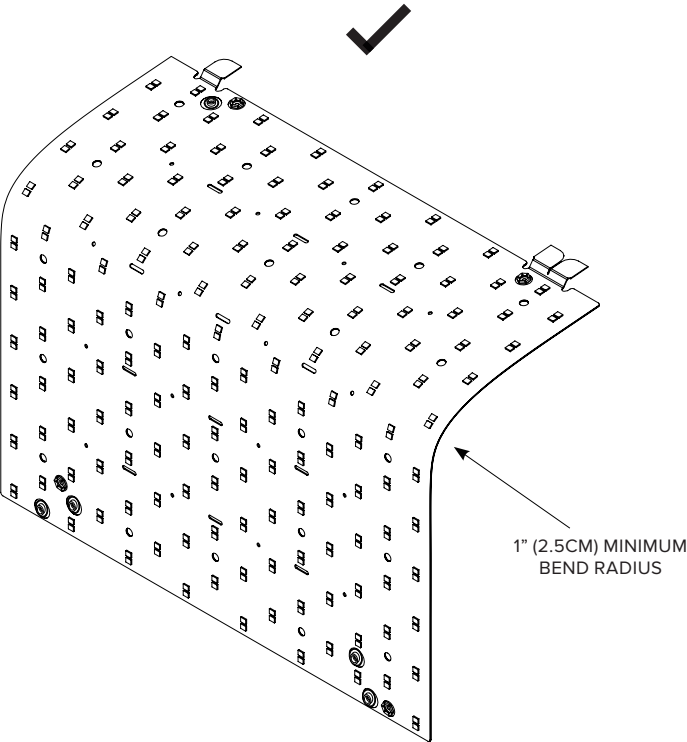
AC

Power  
Supply

Control  
Module

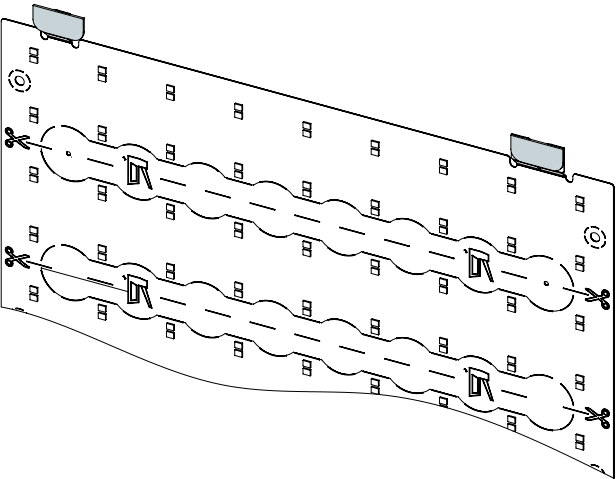
Optional for TILE Exterior  
Must be mounted in an IP rated  
enclosure if installed outdoors

DO NOT BEND SHEETS SHARPLY AROUND CORNERS

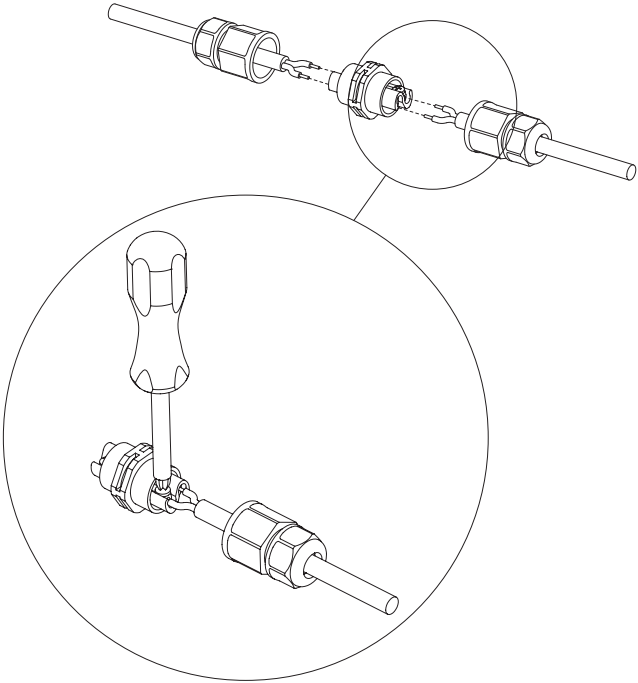


CONNECTOR TAB INSULATION

Cover any free hanging connector tabs with insulating tape.

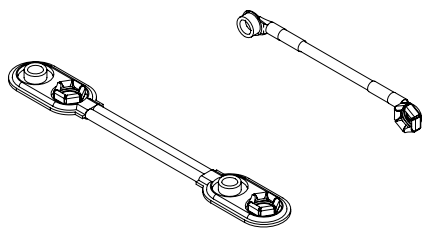


SPLICE CONNECTOR INSTALLATION

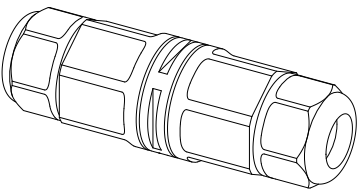


STARTER KIT CONTENTS

Cut Tile Reuse Jumper Cable (4)



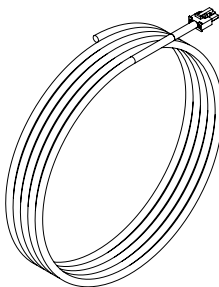
Splice Connector (2)



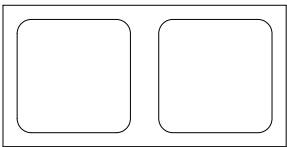
T-Cable End Cap (4)



16 AWG (1.3mm²) Cable,  
10ft (3m) Length

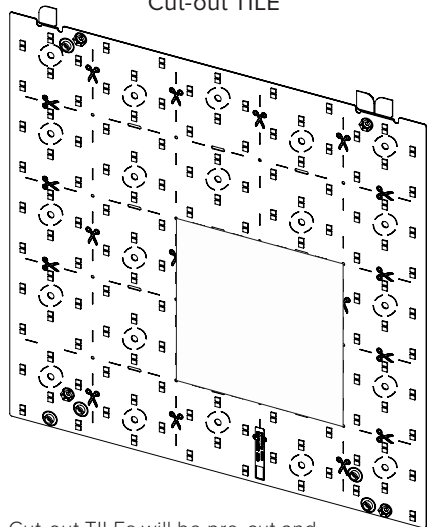


Splice Connector (6)

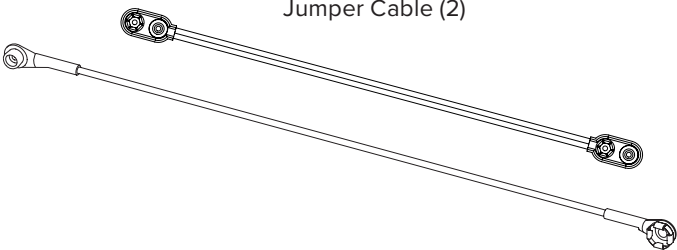


CUT-OUT KIT CONTENTS

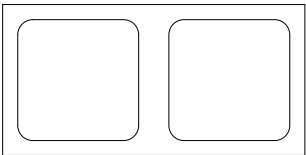
Cut-out TILE



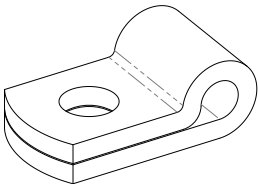
Jumper Cable (2)



Insulating Patches (2)



Cable Clamp (2)



Cut-out TILES will be pre-cut and may not match the image shown.